

# Police Crime Commissioner Welcome Pack



Visit [www.halton.gov.uk/respecthalton](http://www.halton.gov.uk/respecthalton)  
Follow us on [www.twitter.com/myhalton](https://www.twitter.com/myhalton)



## Safer Halton **PARTNERSHIP**

a member of the Halton Strategic Partnership

\*Safer Halton Partnership is made up of a number of service providers including:

Halton Borough Council, Cheshire Police, Cheshire Fire & Rescue, Cheshire Probation Service, Halton & Warrington Youth Offending Teams, Halton Voluntary Action, Halton Housing Trust & other social landlords, Cheshire Chamber of Commerce and NHS Halton & St Helens.

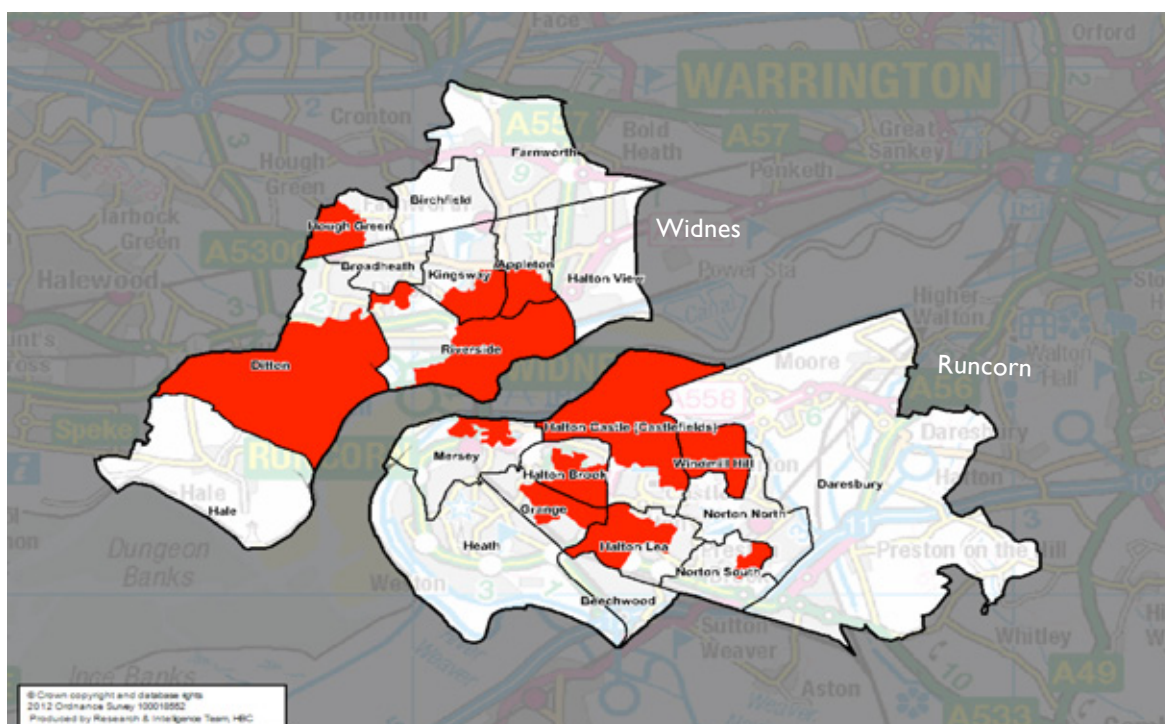
## One Halton – One Vision

This welcome pack has been prepared by the Safer Halton Partnership for the first Cheshire Constabulary Crime Commissioner. The pack tells you about Halton and gives a short introduction to Halton's communities. The pack also describes the current activity and successful projects that are currently helping to:- **Make residents and visitors of Runcorn and Widnes safe and feel safe.**

## Two Towns – Six Parishes

Halton is a largely urban area when compared to other areas of Cheshire. Its two biggest settlements are Widnes and Runcorn that face each other across the River Mersey, 10 miles upstream from Liverpool.

Unlike Warrington, Cheshire East and Cheshire West and Chester, Halton shares many of the social, economic and crime/ASB issues more associated with its urban neighbours in Merseyside.



11 Local Super Output Areas which fall in the top 3% most deprived nationally. (Index Multiple Deprivation IMD 2010).

Halton has 11 communities that feature in the top 1000 out of 32,482 communities most deprived communities. This compares 5 in total across Cheshire East, West and Warrington.

Today, Halton is considered to be a world class provider and location for scientific development, innovation, logistics and multi-modal transportation. This is evidenced through its major regeneration activity and successful private and public partnership programmes.

Developments include Sci Tech, Daresbury Enterprise Zone, The Mersey Gateway Bridge, 3MG and the Hive Leisure Park. Stobarts, Tesco, Diagio, O2, Mexichem and INEOS are also major players in Halton. Despite the levels of deprivation, new and exciting programmes of opportunity are helping to tackle social exclusion, worklessness, health inequalities and the community safety problems of the past.

## Our Population

Halton Borough Council serves a **population** of 125,800 (Census 2011) and 53,300 households.

Age 0 -14 = 23,400

15 - 64 = 83,900

65+ = 18,400

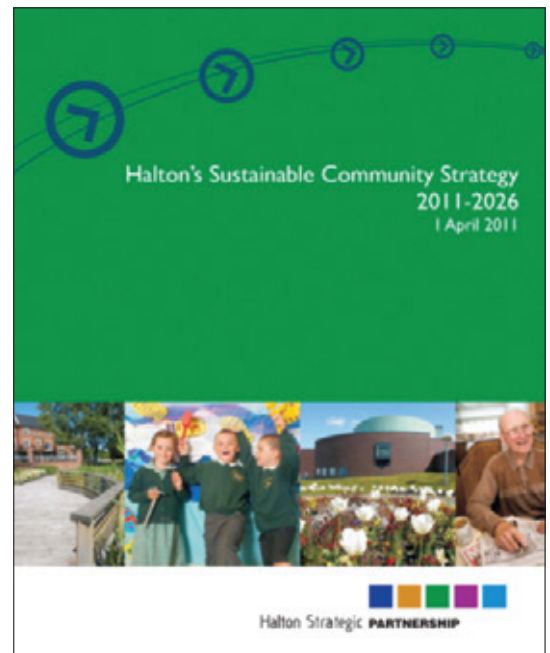
If you want to know more about Halton, go to our Sustainable Community Strategy at [www.halton.gov.uk/scs](http://www.halton.gov.uk/scs)

## Our Strategic Priorities

The five strategic priorities for Halton are:

- Safer Halton
- Healthy Halton
- Environment and Regeneration in Halton
- Halton's Children and Young People
- Employment, Learning and Skills in Halton

The 5 Specialist Strategic Partnerships groups work to ensure these priorities are effectively delivered by a whole range of groups and organisations and are properly 'joined up' to make a real difference to the lives of local people.

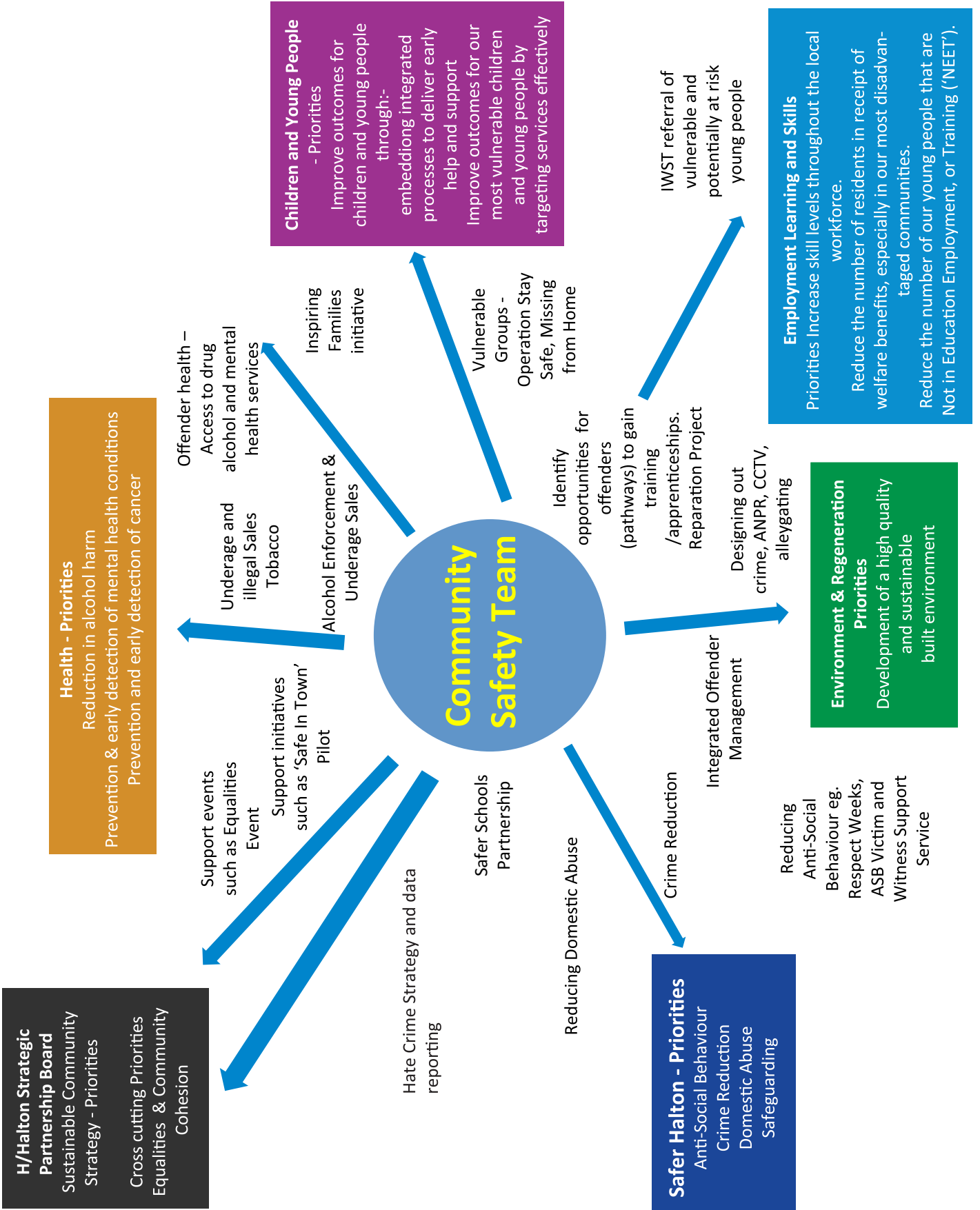


## The Safer Halton Partnership

Safer Halton Partnership is made up of Halton Borough Council, NHS Merseyside/Halton/St Helens, Runcorn and Widnes Neighbourhood Policing Units (Cheshire Constabulary), Cheshire Fire and Rescue, Cheshire Probation Service, Halton Youth Offending Team, Registered Social Landlords (6 main providers of housing) and community groups.

The Safer Halton Partnership is supported by the Halton Community Safety Team (CST). The schematic Diagram on page 4 shows how the CST works across the Halton partnership architecture (5 strategic priorities) to ensure community safety and crime reduction are at the heart of the partnership activities throughout Halton.





**Employment Learning and Skills**

Priorities Increase skill levels throughout the local workforce.

Reduce the number of residents in receipt of welfare benefits, especially in our most disadvantaged communities.

Reduce the number of our young people that are Not in Education Employment, or Training ('NEET').

**Environment & Regeneration**

Priorities

Development of a high quality and sustainable built environment

**Safer Halton - Priorities**

Anti-Social Behaviour

Crime Reduction

Domestic Abuse

Safeguarding

**H/Halton Strategic Partnership Board**

Sustainable Community Strategy - Priorities

Cross cutting Priorities

Equalities & Community Cohesion

## The Data

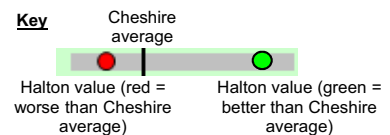
The two tables below show some of the social, economic, health (alcohol) and crime factors in Halton when compared against the other 3 Unitary Authorities. This information will hopefully give a flavour of some of the challenges and obstacles that Halton faces but more importantly it shows the importance of all partners working together to achieve a Halton that succeeds socially, economically, environmentally and one that is free from crime and free from the fear of crime.

**Table 1 – Alcohol and Deprivation Statistics**

National rank out of 326 Local Authorities (1 is good and 326 is worst)	Halton	Warrington	East	West
<b>ALCOHOL DATA</b>				
A&E Admissions Under 18	319	246	282	236
A&E Harm (all ages)	312	280	196	223
Recorded Crime	231	184	120	131
Violent Crime	232	187	130	140
Sexual Offences	183	210	93	56
<b>DEPRIVATION DATA</b>				
Index Multiple Deprivation	299	173	100	155
Unemployment	297	215	135	191
Number of Deprived Communities in the top 1000 (Out of 326,200)	11	1	0	4

This data is taken from the 2012 North West Public Health Observatory – Liverpool John Moores University and the Communities and Local Government English Indices of Deprivation 2010.

**Table 2 – Social (Wider determinants)**



Domain	Indicator	Halton	Cheshire average	Cheshire worst	Cheshire range	Cheshire best
Population	1 Population Growth 2001-11	6.4%	4.5%	2.4%		6.4%
	2 0-14 age group	18.6%	17.0%	16.4%		18.6%
	3 15-64 age group	66.7%	65.1%	64.1%		66.7%
	4 65+ age group	14.6%	17.8%	14.6%		19.3%
Economy	5 Jobs in public admin, education & health	31.2%	28.5%	22.3%		31.2%
	6 Average weekly earnings (£)	£432	£486	£432		£513
	7 Unemployment (JSA claimants)	5.7%	3.8%	5.7%		2.5%
	8 Youth unemployment (JSA claimants aged 18-24)	12.6%	7.6%	12.6%		6.1%
	9 Worklessness (claiming out-of-work benefits)	19.0%	12.6%	19.0%		8.6%
	10 No qualifications	11.5%	8.7%	11.5%		8.4%
	11 Qualified to NVQ3 and above	42.5%	52.0%	42.5%		56.7%
	12 GCSE attainment	56.3%	61.1%	56.3%		64.4%
Housing	13 House prices (£000)	134	177	134		209
	14 Long-term vacant dwellings (%)	1.4%	1.3%	1.5%		0.9%
	15 Earnings to house price ratio	4.4	5.7	6.8		4.4
Quality of Life	16 Life expectancy - females (years)	79.6	81.6	79.6		82.9
	17 Life expectancy - males (years)	75.5	78.1	75.5		79.5
	18 Deprivation (IMD score)	32.5	20.3	32.5		13.3
	19 Crime (per 1,000 residents)	42.8	33.6	42.8		27.6

## A Strategic Approach - Intelligence Led

The **Community Safety Joint Strategic Needs Assessment (JSNA)** and **community profiles** provides much more detailed analysis about Halton communities, their hopes, priorities and expectations, the challenges, the evidence and the data to support our activities and priorities.

A copy of the JSNA can be provided from the Halton Community Safety Team or Northern BCU Crime and Intelligence Unit.

## More About The Halton Community Safety Team

The Halton Community Safety Team is a multi-agency team of specialists committed to promoting community safety and harm reduction so that Halton is a safe place to live, work and visit. Their purpose is to support partners and communities to identify and analyse local problems and to develop short and long term strategies and interventions.

The Community Safety Partnership Team is not a virtual group. In Halton the team are based in co-located buildings which enable all of the respective organisations listed below to share personal information in a quick, secure and effective manner. In turn this enables smart and effective joined up initiatives, operations and orders to be delivered in a timely manner.

The role of Halton Community Safety Partnership is to make sure that partners are co-ordinated in their approach to:-

1. Targeting Offenders
2. Making public spaces and communities safe.
3. Supporting victims and delivering timely, effective and appropriate solutions to local problems.



## 7 Services – One Community Safety Team

1. ASB
2. Alcohol Harm and Licensing
3. Safeguarding Young people – Safer Schools Partnership / Education
4. Integrated Offender Management
5. Crime Reduction – Prevention and Education.
6. Supporting BME groups (Gypsy Traveller, Hate Crime)
7. Domestic Abuse



## 7 Outcome Measures

1. A reduction in reported ASB and the public's level of fear and insecurity from ASB
2. A reduction in the levels of alcohol related harm and disorder
3. A reduction in the offending rates of those adversely affecting the community the most.
4. A reduction in reported violent and acquisitive crime and the public's level of fear and insecurity from crime
5. An improvement in the public's perception of safety and security in public spaces
6. An improvement in the safety of our most vulnerable families, children and individuals
7. A reduction in the reports of domestic abuse and the vulnerability of becoming a victim of domestic abuse

**Table 3 - Police Data (Runcorn and Widnes Neighbourhood Policing Unit)**

<b>CRIMETYPE</b>	<b>2010 / 11</b>	<b>2011 / 12</b>	<b>FYTD 1st April - 31 August</b>
Total Crime	10173	9819	3699
Serious Acquisitive	1641	1547	463
Household Burglary	529	515	152
Vehicle Crime	1002	953	282
Theft Of Vehicle	276	280	79
Theft From Vehicle	726	673	203
Robbery	110	79	29
Personal Robbery	84	58	19
Business Robbery	26	21	10
Serious Violence	90	73	28
Assault Less Serious	982	814	290
Violence With Injury	1066	883	319
Rape	30	34	13
Serious Sexual	85	86	24
Criminal Damage	1992	1827	722
Shoplifting	896	933	390
Other Burglary	745	922	317
ASB	8473	7424	3129
ASB Alcohol	1243	1123	413

## Identification Of Vulnerable Communities (Victims)

This section puts in context the vulnerability of the victims and communities in Halton when you piece together the social and economic data (Page 5) together with the crime and ASB data. Community Profiles for ward data are attached to this Welcome Pack.

**13 Halton Wards – HIGH RISK**  
 (Over 74 crimes and ASB incidents per 1000 population)

**X**

### 4 HARM FACTORS

- Repeat victims
- Illness and disability
- People who are at home for lengthy periods
- Areas of deprivation.

**= HIGH VULNERABILITY and SAFER HALTON PARTNERSHIP ACTIVITY**

The 2011 Her Majesty’s Inspectorate of Constabulary (HMIC) ASB review called “Stop The Rot” used 4 crime and ASB rates to identify residents and communities that could be considered at high risk (74 - 113 incidents per 1000) of being victims. The HMIC Review shows Cheshire Constabulary as moderate risk overall. Using the same table for Halton it would show 13 wards in the Higher risk category.

**Risk Table 4 – How to identify vulnerable Wards / communities in Halton**

Highest Risk	Area Forum	High Risk Wards	Total Crime Per 1000	Total ASB Per 1000
1	2	Riverside	157	172
2	6	Halton Lea	141	157
3	2	Appleton	136	130
4	4	Mersey	115	138
5	2	Kingsway	100	115
6	5	Halton Castle	100	95
7	5	Windmill Hill	89	96
8	4	Halton Brook	75	89
9	1	Ditton	70	92
10	4	Grange	69	95
11	5	Norton South	60	97
12	1	Broadheath	75	75
13	1	Hough Green	68	75



## Halton Activities and Results - What Do We Actually Do?

The list below is a 12 month snapshot of some of the successful activities. A full list of activities is documented in the Community Safety Team Review in 2012.

63 victims / clients- 10 service users receiving intensive support.

Over 60 Acceptable Behaviour Contracts signed, 2 CRASBO's and 7 ASBO's.

RESPECT weeks of action (School Summer holidays / Mischief night / Xmas)

Launch of Neighbourhood Resolution Panels. Only 1 of only 8 areas across the UK.

13 funded PCSO's including 2 dedicated ASB PCSO's (Blue Lamp project).

2 Deployable CCTV units that are 24 hour monitored and recorded by Halton borough Council CCTV Control Room.

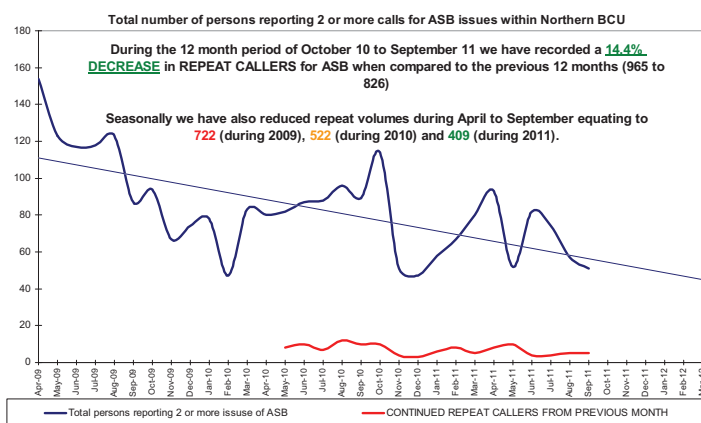
Effective training of Police Call Handling to identify repeat and vulnerable victims early.

Effective use of data and information sharing through police beat management meetings, systems and performance dashboards

Weekly police and partnership beat meetings supported by monthly Partnership Tasking and Co-ordination (T&C) and Multi-Agency Meetings (MAM). These weekly and monthly task and finish groups enable the identification of problem locations, communities, victims and offenders and joined up partnership working to tackling the problems. Copies of the minutes, process maps and problem profiles can be provided.

Tables 5 and 6 show that the partners and the communities of Halton are working effectively to achieve some real positive results to make Halton a safer place.

**Table 5 – Repeat Victims for ASB**

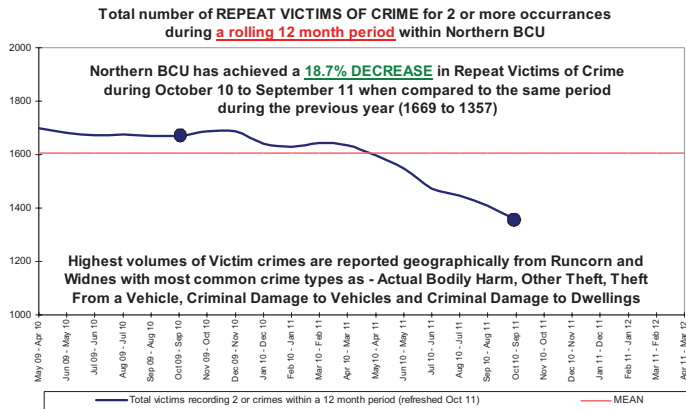


Repeat callers (Harm indicator) for ASB incidents during:-

1. April - June 2010 was 130
2. April - June 2011 was 113
3. April - June 2012 was 83

The community of Halton show no meaningful distinction between crime and ASB and this is why Halton CST is serious about tackling ASB at all levels.

**Table 6 – Repeat Victims of Crime**



## A reduction in the levels of alcohol related harm and disorder

The Halton Licensing Team monitor daily incidents (assaults etc) occurring in and around the two night time economies (town centres) in Halton. All of the 230+ licensed premises are visited over a 12month basis to check compliance with licensing conditions and any premises that incurs any incidents will follow the 3 stage process below.

Widnes has 74 On Licensed Premises, 43 Off Licensed Premises and 14 Club Premises whilst Runcorn has 50 On Licensed Premises, 41 Off Licensed Premises and 8 Club Premises. The licensing team operate a Red, Amber, Green (RAG) system to identify problem premises in accordance with the 3 stage approach illustrated below.

- Stage 1** Investigate and issue warning
- Stage 2** Monitoring and enforcement of action plan (3 months)
- Stage 3** Collation of evidence and presentation of information to Licensing Officer for premises review.



## Operation Stay Safe

Operation Stay Safe is delivered on a monthly basis with the purpose of identifying vulnerable young persons who are under the influence of alcohol. The operation is run by the police with the support of the partnership ASB Unit, the Team Around the Family and Missing From Home Officer. The initiative enables the specialist professionals to challenge the behaviour of the drinking and hold the parents or guardians accountable.

During the last 12 operations we have seen 52 young people taken to the place of safety, over 200 alcohol vessels seized and nearly 3000 young people spoken to.

Since April 2011, 54 test purchases have been carried out in Halton and it has resulted in three failures. Proxy purchasing is also identified in Halton as a problem and intelligence led operations and surveillance are being undertaken.



## Crime Reduction

12 Burglary days of action have been delivered over a 12 month period in 6 burglary high-risk communities (2 days in each community). The days of action were carried out in the Ditton, Hough Green, Kingsway, Castlefields, Riverside and Halton Brook wards. Problem profiles and data analysis were carried out by the CSP analyst so that high risk areas, burglary victims and streets were targeted. - 68% reduction in crime across the 6 areas.

## RESPECT weeks

The programme brings together a wide variety of agencies and organisations who, with the help of local residents, tackle a host of crime and ASB issues. They also look at ways to bring the community closer together with sporting and healthier lifestyle activities for both young and older people alike.

The Respect programme has focused on seasonal ASB periods including term time school holidays (GCSE results week), Halloween (Mischief night and Bonfire) and the lead up to Christmas when we see a rise in acquisitive crime.



Visit: [www.halton.gov.uk/respecthalton](http://www.halton.gov.uk/respecthalton)  
Follow us on: [www.twitter.com/myhalton](https://twitter.com/myhalton)

## Case Study: ASB Victim Support

A referral was made in 2011 by the YOT to the ASB Victim Support service to support the mother who was suffering Domestic Abuse from her own son. Her 17 year old son is a well known prolific and repeat offender of ASB and crime and was also known to the local community.

The boy first came to the attention of the Community Safety Team (CST) back in 2008 / 2009 when he was 13 years of age. He was causing repeat ASB offences in the Sunningdale Drive area of Widnes.

At that time, the Community Safety Team carried out an Acceptable Behaviour Contract and the family (Dad and partner) was offered the support of Youth Inclusion Support programme (YISP) and the Family Intervention Programme (FIP), however due to his failure to engage with the services the support was later withdrawn. He was served with a 2 yr ASBO in 2009.

During the Order his Dad was concerned about losing his tenancy with Halton Housing Trust and he eventually took the difficult decision to request that his son leaves the house. His son moved in with his mother in Runcorn. Subsequently, ASB increased in the Halton Brook area in Runcorn and the services mentioned above were once again engaged. This time the community of Runcorn were suffering and sadly so was his mother and his two sisters.

See below the pattern of activities that followed.

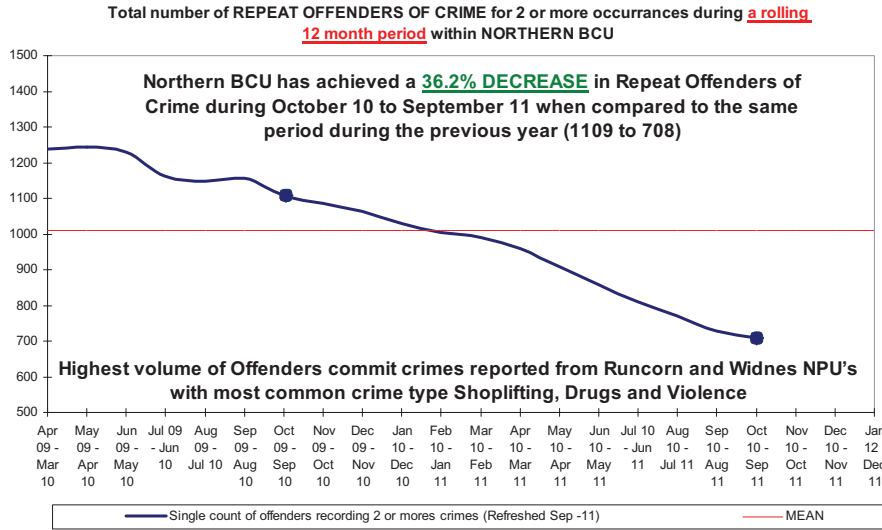


Victim (Mother and sisters)	Offender (Aged 17)	Location (Victims)
<p>Individual Support Plan was completed (May 2011) for his mother and sisters.</p> <p>Personal and home security (Sanctuary scheme) measures provided.</p> <p>Support plan updated every 6 weeks. Victim contacted at least weekly and regular PCSO presence.</p> <p>Full ASBO February 2012.</p> <p>Supporting applications to be re-housed with other siblings; prompted by the adverse reaction to the press coverage by the community.</p> <p>Victim moves into new property on 30th July 2012, transitional support provided.</p>	<p>Linked to the Youth Offending Team for several years. Offender told not to visit the family address.</p> <p>Part of police IOM 'cohort following a period spent in young offenders institution July 2011 (Detention and Training Order).</p> <p>Other partner agencies involved; ASB Enforcement Officer, Halton Housing Trust agencies attending monthly Multi Agency Meetings intelligence shared.</p> <p>Offender does not remain hostel accommodation staying a various locations in Halton.</p> <p>Offender sentenced to 4 month Detention and Training Order due to breaches of supervision</p>	<p>Halton Brook Runcorn focus of the Anti Social Behaviour</p> <p>Housing Provider Riverside convenes community meeting following article in local press February 2012.</p> <p>Police run an engagement event and a monitored CCTV deployable camera fixed to street lamppost.</p>

## Halton Domestic Abuse Service

This is a local support service for medium and high risk victims of Domestic Abuse. It comprises an Independent Domestic Violence Advocate (IDVA), 2 Floating support staff and the Sanctuary Scheme. These staff offer safety planning and crisis intervention support for clients to assist them to reduce risk.

Table 7 - Repeat Offenders of Crime



Most crime in a community is carried out by a small number of prolific offenders. Integrated Offender Management (IOM) brings together those organisations from the public, private and voluntary and community sector to tackle a cohort of prolific offenders and repeat offenders through intensive pathways, programmes combining rehabilitation and enforcement i.e 83% have Drugs as a pathway, 67% have education, training and employment, 58% have attitudes, Thinking and behaviour and 54% have Accommodation.

The Cohort comprises of approx 55 offenders. There are 24 Prolific Priority Offenders (PPO) and 31 Repeat Offenders on the IOM scheme.

IOM Cohort PPO Rates for Q1 2013 (April -June)

Baseline number of convictions	Actual convictions during nomination	Difference between baseline and actual	% impact
55.25	8	47.25	85.52% ↓

IOM Cohort Repeat Offenders for Q1 2013 (April -June)

Baseline number of convictions	Actual convictions during nomination	Difference between baseline and actual	% impact
53	21	32	60.38% ↓

## Current Investment

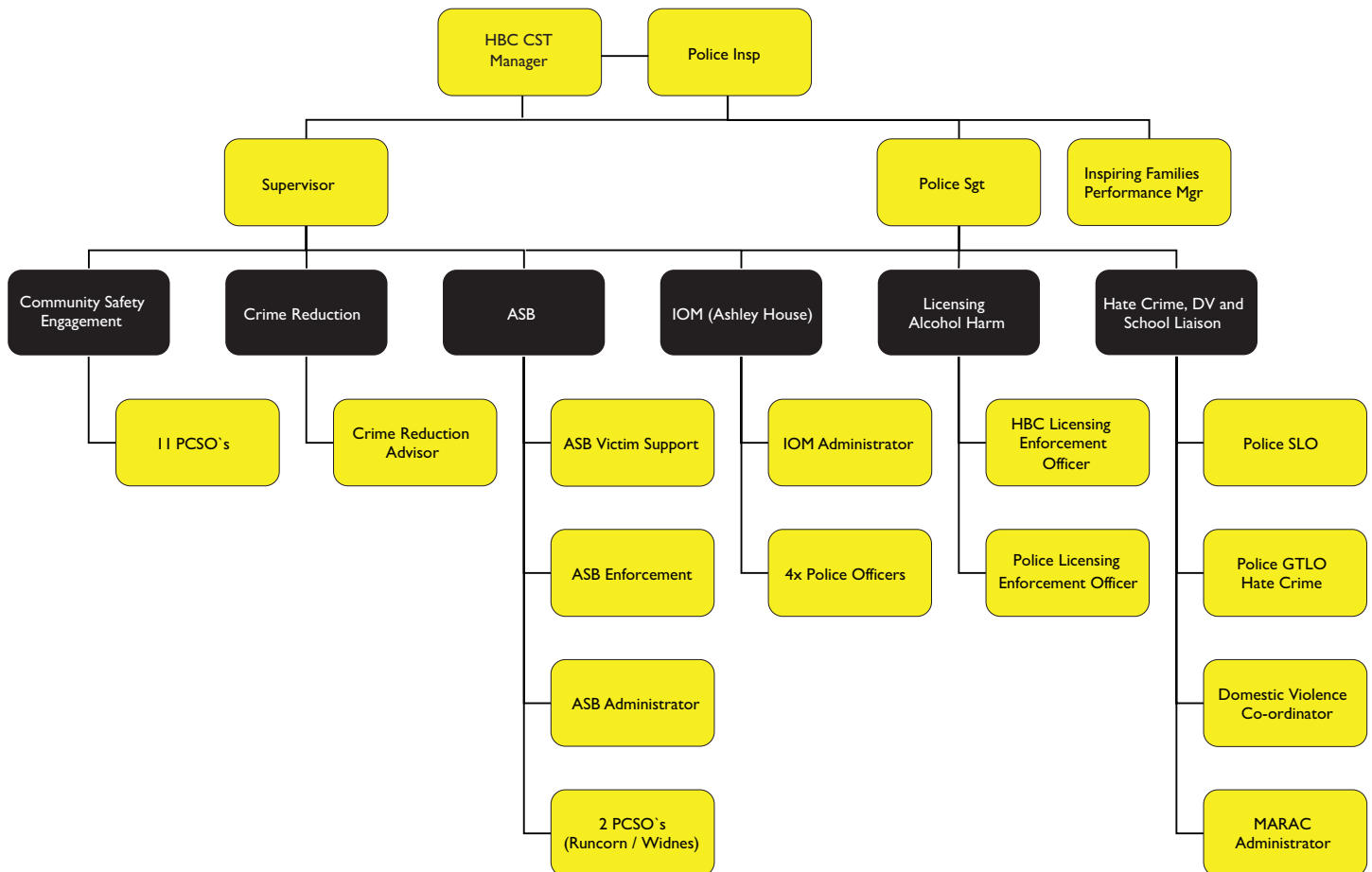
Community Safety and Harm Reduction is a responsibility of ALL public sector staff. The below organogram shows the investment by Halton Borough Council and Cheshire Constabulary towards a co-located team of specialist professionals.

### Blue Lamp

Each quarter the Widnes and the Runcorn Neighbourhood Policing Units in conjunction with the CST produce an information bulletin. The latest bulletins are attached to this Welcome Pack. They provide real examples of how the Police, CST, the SHP together with the community are tackling crime in Halton.

### Staffing Investment

The team comprises of 19 staff and 13 funded PCSO's (Blue Lamp). A full breakdown of staffing costs, inc salaries is available within the CST team review of 2011.



## Funding and Project Investment

Budget	Staff 2013/14	PCC Ask / Contribution
HBC PCSO (13) Contribution (Blue Lamp)	£153,000	
Police PCSO (13) Contribution (Blue Lamp)	£ 260,000	
HBC / WNF CST (5 1/3+1/2 shared funding HBC/Police)	£269,000	
Navigate IOM (5) Sgt + 4 officers	£309,300	
Police Staff CST (2 / 1/3+1/3+1/2)	£97,500	
Insp / Licensing (4) Officer / GTLO / SLO	£228,100	£25,000 (Alcohol Harm Reduction)
Probation Funding (1/3rd)	£8,000	
Total Staffing Costs (19 + 13 Blue Lamp PCSO`s)	<b>£1,324,900</b>	
SHP FUNDING (Projects) ASB - £45,000 Licensing - £85,000 Domestic Abuse - £55,000 IOM - £10,000 Total Funding Costs	<b>£195,000</b>	£75,000 (Inspiring Families / ASB Victim and Witness / YOT / Domestic Abuse)
<b>SHP Investment</b>	<b>£1,519,900</b>	<b>PCC £100,000</b>



# Safer Halton **PARTNERSHIP**

a member of the Halton Strategic Partnership

